



Fees and Booking

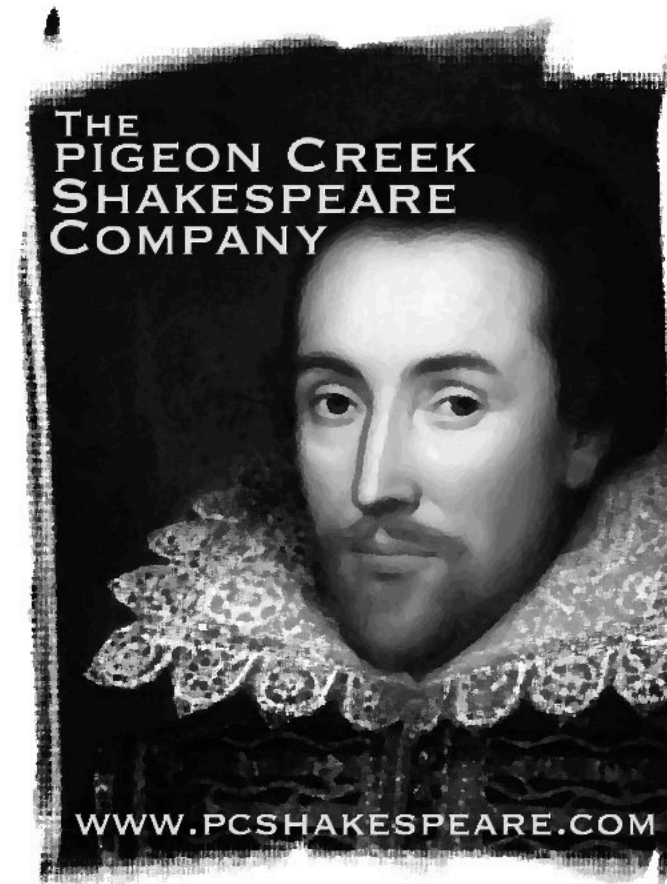
The Pigeon Creek Shakespeare Company accepts booking requests year round and availability is on a first come first served basis. Please allow a minimum of 6 weeks between the time your request is received to the date of your workshop.

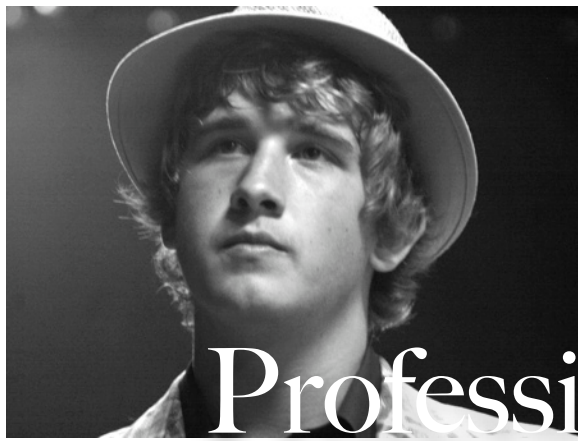
Workshop fees are custom tailored for each booking in order to ensure the lowest prices for you. We are committed to providing superior educational programming at the best possible value.

For booking information please contact Michael Empson, Education Co-Chair for the Pigeon Creek Shakespeare Company, at mike@pcshakespeare.com

THE PIGEON CREEK SHAKESPEARE CO.
823 SLAYTON AVE
GRAND HAVEN, MI 49417

Bring Shakespeare to Your Classroom!





Professional Theatre and English

Workshops

Who is PCSC?

Based in Grand Haven, Michigan, the Pigeon Creek Shakespeare Company was founded in the summer of 1998 by Chicago-area actor and director Frank Farrell and a group of local West Michigan actors, including current executive director Katherine Mayberry. The company began performing the works of William Shakespeare outdoors in the Ottawa County Parks each summer. We are currently the only professional Shakespeare company in Michigan producing a full year round season.

The Pigeon Creek Shakespeare Company is an Original Practices company which is dedicated to bringing to its performances the authentic practices of Shakespeare and his actors. These practices include such performance elements as universal lighting (all lights on), audience contact (speaking directly to audience members), live music (performed by the actors), and doubling (one actor playing multiple roles).

Why Pigeon Creek Shakespeare?

We understand that it is most beneficial to the learning process when students are able to participate actively in the classroom. Through our array of workshops students are able to observe and participate in some of the greatest scenes to grace the pages and stages of the modern world. Both practical and academic in nature these workshops are sure to get your students thinking differently about the world of Shakespeare and what exactly his plays meant to Early Modern audiences as well as for themselves.

Over the past several years we have fine tuned a number of workshops that appear to have the broadest appeal to students and educators. Our selections however are not limited to those found in this brochure. Custom tailored programs are available based on your needs. Program length can also be altered to fit any time constraints.

All workshops are conducted by our experienced professional teaching artists.

Available Programs

History of Shakespeare's Theatre

A combination of Lecture and performance familiarizes students with what theatre was like in Shakespeare's day.

Textual Cues to Performance

Students learn about the text analysis actors undertake when preparing roles.

Physical Acting Techniques and Shakespearean Text

Students learn to unite physical action with Shakespearean verse in order to help audiences better understand the language.

Discussions of Specific Plays

When we have a full-length production in rehearsal, we can arrange a discussion of that specific play in rehearsal and performance, with actors performing scenes and discussing their rehearsal process with students.

It may also be possible to arrange discussions of plays your students are currently reading or performing.